

Combi.039 - Product Specification



Combi – Greenville rope play house combination

Combi.039 – Big Greenville tree house combination with three TRII variants (2x TRII 2 & 1x TRII 3) connected to each other with net tunnels. Add ons are access net and Banister.

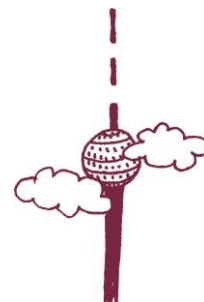
Combi.039 – at a glance.

Product Family:	Greenville	Number of Foundations:	6 pc.
Item Number:	90.293.039	Concrete Volume C20/C25:	5.64 m³ (199.2 ft³)
Children's Age:	5+	Number of skilled installers required:	4
Fall Height (DIN EN 1176):	2.99 m (9'-10")	Installation Time without foundation:	20 h
Length x Width x Height:	9.77 x 11.23 x 5.13 m (22'-3" x 26'-10" x 16'-11")	Dimensions of largest part:	4.0 m x 0.8 m x 0.2 m (13'-2" x 2'-8" x 0'-8")
Protective Surfacing Area (DIN EN 1176):	13.99 x 12.28m	Weight of heaviest part:	125 kg (275.6 lbs)
Protective Surfacing Area (ASTM 1487):	14.88 x 10.43m (48'-10" x 34'-3")	Shipping Volume:	12.0m³
Minimum space required DIN EN 1176:	92.57 m²	Gross weight:	1800 kg (3968,4 lbs)
Minimum space required ASTM 1487:	102.36 m² (1273 sf)	Spare part guarantee:	Lifelong

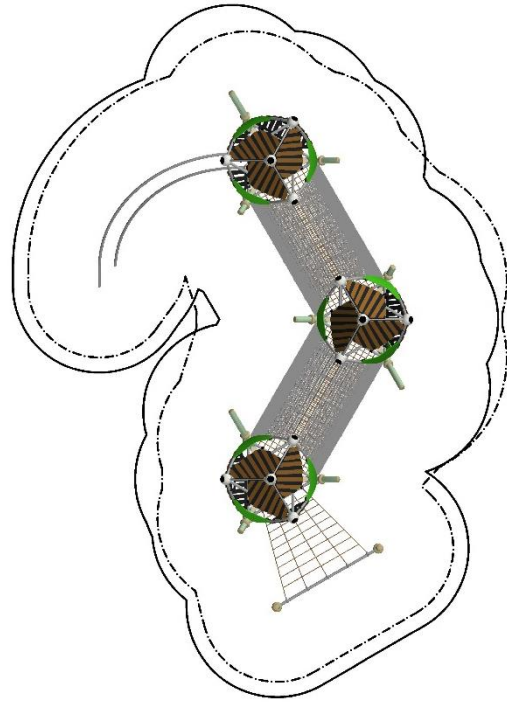
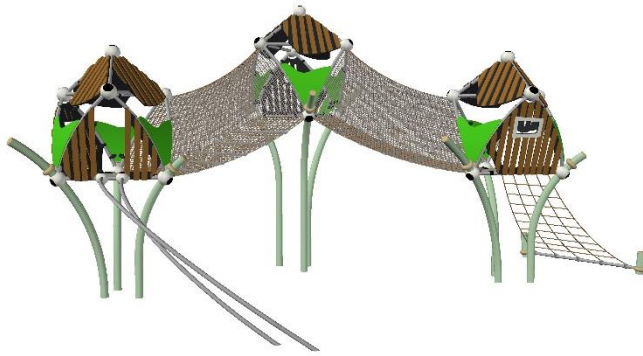

Berliner
 Berliner Seilfabrik GmbH & Co.
 Lengeder Straße 2/4
 D-13407 Berlin

Tel. +49.(0)30.41 47 24-0
 Fax +49.(0)30.41 47 24-33

info@berliner-seilfabrik.com
 www.berliner-seilfabrik.com



Combi.039 - Product Specification



Technical Data.

The following text can also be used for tenders.

- Two TRII 2 with access net, Banister, access net and bamboo panels
- TRII 3 with bamboo panels
- Two net tunnels as connection elements

Tube framework:

A combination of straight and bended stainless steel Frameworkx-®tubes, Ø 60.3 m (2 3/8"); the tubes are connected to build an oblated icosahedron space framework

Nodes:

Frameworkx-aluminum ball connectors; Ø 250 mm (9-13/16"); anti-corrosion treatment and color finish: sandblasting and solvent-free zinc-/ epoxy-/ polyester-process; incorporating an ASTEM TT net tensioning system; securely closed with durable EPDM- caps

Ropes:

U-Rope®-round strand ropes with galvanized and covered wires; external strands with non-abrasive UV-resistant Polyester-yarn (no Polypropylene): Ø 16- 18 mm (5/8" - 11/16")

Bamboo panels:

Bamboo strips 90 mm, (3 1/2") mounted at a particle board made from HDPE, 19 mm (3/4") thickness, rounded edges, mounted with aluminum plate clamps to the tubes of the framework

Steel posts:

Steel pipes Ø, 133 mm (5 1/4") with a rounded cast aluminum post top, minimum wall thickness 7.1mm (1/4"); anticorrosion treatment and color finish: sandblasting and zinc-/ epoxy-/ polyester-process.

Cross tubes made of stainless steel Frameworkx-®tubes, Ø, 60,3 m (2 3/8"), material AISI304 (DIN 1.4301).

Access net:

Rope Ø, 16 mm (5/8"), mesh size 300 x 300mm (11-13/16"x11-13/16"), rope crossing points localized by durable, drop forged aluminum-ballknots (no plastic).

Banister:

Collateral straight stainless steel pipes, Ø 60.3 mm (2 3/8"); material AISI304 (DIN 1.4301), connected to the main structure with Frameworkx-aluminum ball connectors, Ø, 200mm (7 9/10")

Net tunnel:

Net tunnel with in situ-replaceable square rungs; rungs comprised of stainless steel profile AISI304 (DIN 1.4301) with aluminum end cap; rope Ø 16 mm (5/8"); mesh size minimum 250 x 250 mm (9-4/5"); rope crossing points localized by durable, drop forged aluminum ballknots (no plastic); safety net comprised of stainless steel net, Ø 4 mm, mesh size 40 x 40 mm




Berliner
Berliner Seilfabrik GmbH & Co.
Lengeder Straße 2/4
D-13407 Berlin

Tel. +49.(0)30.41 47 24-0
Fax +49.(0)30.41 47 24-33

info@berliner-seilfabrik.com
www.berliner-seilfabrik.com