

# Quadro Boo– Product Specification



## Quadro Boo

An three

The Quadro Boo is the newest addition to our rope playhouses!

After Boo, Double Boo and Triple Boo, the Quadro Boo offers the possibility to climb up to a height of nearly 7 metres thanks to its three-dimensional net! The Boo-family thereby reaches unimaginable heights and lets the hearts of climbing enthusiasts beat a little faster.

### Quadro Boo – at a glance.

Product Family:	Greenville	Number of Foundations:	5 pc.
Item Number:	90.280.014	Concrete Volume C20/C25:	1.6 m <sup>3</sup> (57 ft <sup>3</sup> )
<b>Children's Age:</b>	5+	Number of skilled installers required:	3
Fall Height (DIN EN 1176):	2.9 m (9'-8")	Installation Time without foundation:	16 hours
Length x Width x Height:	2.9 m x 6.6 m x 6.8 m (9'-8" x 21'-9" x 22'-2")	Dimensions of largest part:	4.8 m x 0.9 m x 0.7 m (15'-9" x 2'-12" x 2'-4")
Protective Surfacing Area (DIN EN 1176):	11.1 m x 7.9 m	Weight of heaviest part:	150 kg (131 lbs)
Protective Surfacing Area (ASTM 1487):	10.3 m x 6.6 m (33'-9" x 21'-8")	Shipping Volume:	6.5 m <sup>3</sup>
Minimum space required DIN EN 1176:	58.2 m <sup>2</sup>	Spare part guarantee:	Lifelong
Minimum space required ASTM 1487:	49.9 m <sup>2</sup> (538 sf)	Gross weight:	1800 kg (3969 lbs)

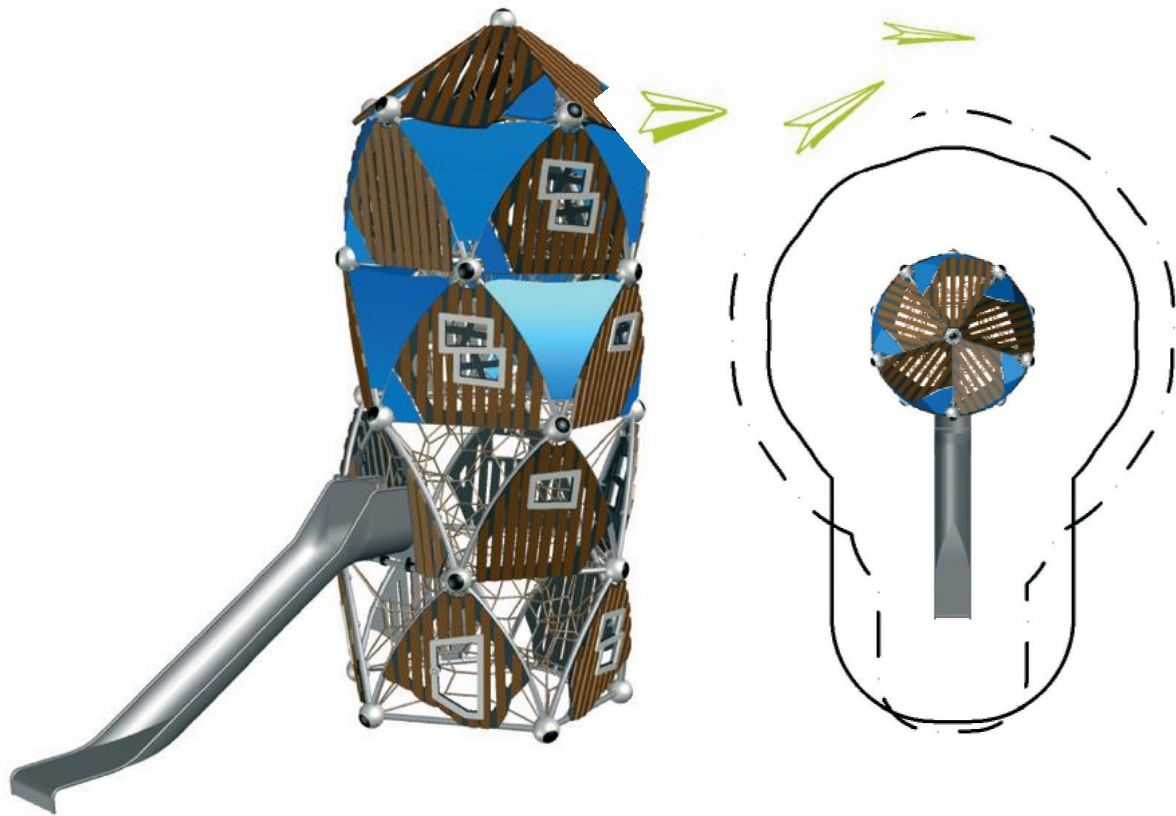


  
**Berliner**  
 Berliner Seilfabrik GmbH & Co.  
 Lengeder Straße 2/4  
 D-13407 Berlin

Tel. +49.(0)30.41 47 24-0  
 Fax +49.(0)30.41 47 24-33

info@berliner-seilfabrik.com  
 www.berliner-seilfabrik.com

# Quadro Boo– Product Specification



## Technical Data.

The following text can also be used for tenders.

### Tube framework:

A combination of straight and bended stainless steel Frameworx-®tubes,  $\varnothing 60,3 \text{ m} (2 \frac{3}{8} \text{")}$ , material AISI304 (DIN 1.4301). The tubes are connected to build a space framework with a triangular footprint

### Nodes:

Frameworx-**aluminum ball connectors**;  $\varnothing 250 \text{ mm} (9 \text{'}-13/16 \text{'})$ ; anti-corrosion treatment and color finish: sandblasting and solvent-free zinc-/ epoxy-/ polyester-process; incorporating an ASTEM TT net tensioning system; securely closed with durable EPDM- caps

### Ropes:

U-Rope®-round strand ropes with galvanized and covered wires, external strands with non-abrasive UV-resistant Polyester-yarn (no Polypropylene). Rope-diameter  $\varnothing 18 \text{ mm} (11/16 \text{'})$

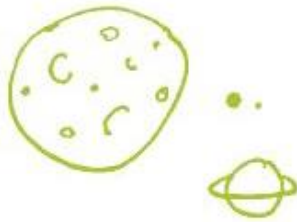
### Special netting:

Rope crossing points are localized with durable, forged aluminum-alloy cloverleaf rings, joint-ferrule, connecting-clamps and barrel-ferrule (no plastic connections); in situ-replaceable rope strands

### Bamboo panels:

**Bamboo strips 90 mm, (3 \text{'}-1/2 \text{'})** mounted at a particle board made from HDPE, 19 mm (3/4 \text{'}) thickness, rounded edges, mounted with aluminum plate clamps to the tubes of the framework

The Quadro Boo also offers endless combinations of all Berliner play units and has numerous entry variants and types of slides.



  
**Berliner**

Berliner Seilfabrik GmbH & Co.  
Lengeder Straße 2/4  
D-13407 Berlin

Tel. +49.(0)30.41 47 24-0  
Fax +49.(0)30.41 47 24-33

info@berliner-seilfabrik.com  
www.berliner-seilfabrik.com