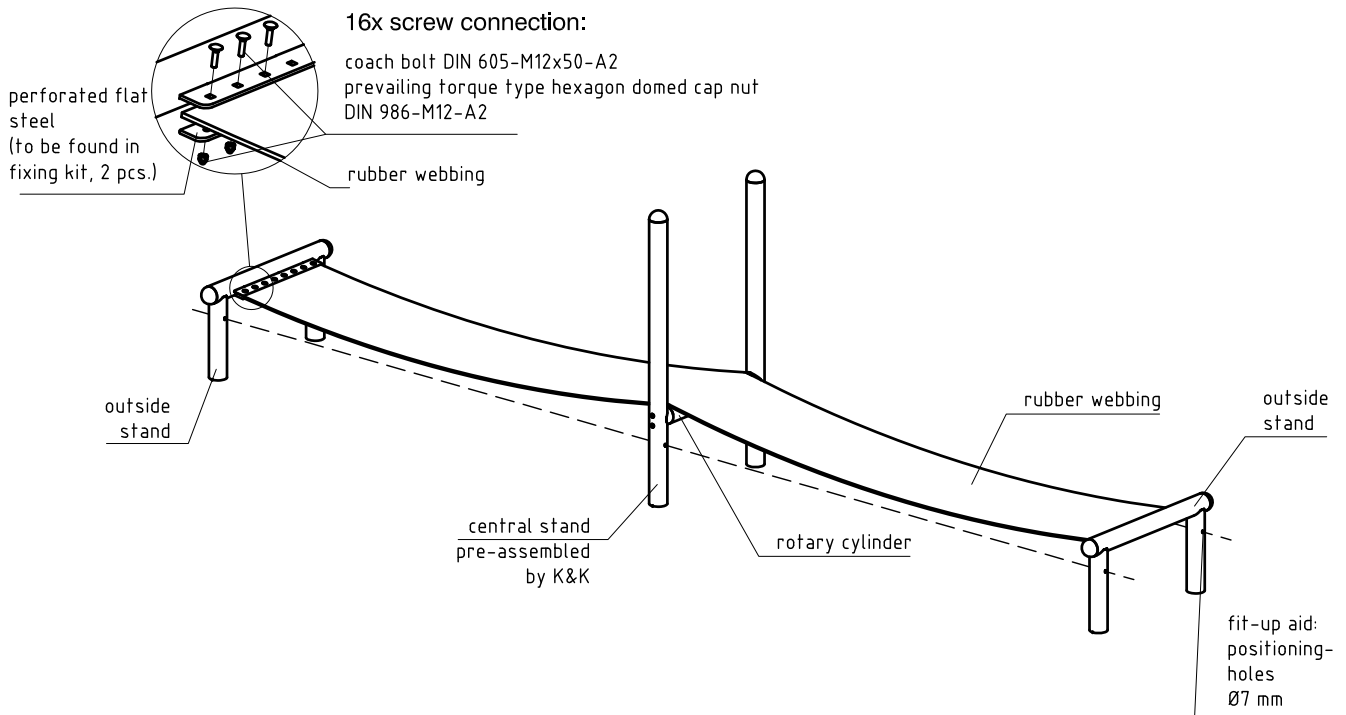
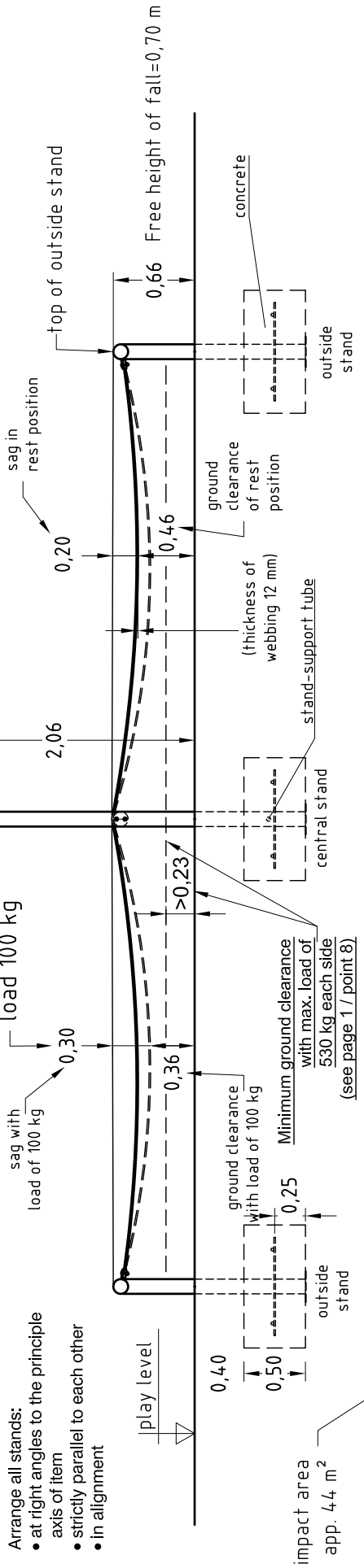


Coat bolts with the supplied liquid threadlocker (medium) and tighten to the specified torque - 120 Nm!



1. Assign location of equipment considering the space requirements.
2. Excavate soil for foundations, according to drawing. Please see that basis of foundation holes are at same level!
3. **Attention! For installation of the pre-assembled components and/or single parts the screws have to be lubricated with installation paste!**
4. Put outside stands and assembled central stand into foundation holes, acc. to drawing (Playlevel-mark=blind rivet). Make sure that all stands are arranged in alignment (possibly with the help of the fit-up holes $\varnothing 7$ in posts). Please observe strictly that the stands are right-angled regarding principle axis of item, furthermore strictly parallel to each other and in alignment.
Respectively insert two reinforcing steel bars BSt 500S- $\varnothing 12\text{mm} \times 800$ into the stands (drill holes factory-made). Crosswise add two further bars BSt 500S- $\varnothing 12\text{mm} \times 1200$ (see foundation layout). In order to retain the reinforcement position, wrap (tying) wire around the intersections and twist the wire ends by means of appropriate pincers.
5. Grout foundations with compressed concrete C20/25. Pay attention that stands do not shift when concrete is filled in.
Cover with a surface which shall meet the requirements for impact attenuation so that the critical height of the surfacing according to EN 1177 shall be equal to or greater than the free height of fall of the equipment (acc. to EN 1176-1).
6. After concrete foundations have set, lay rubber webbing on rotary cylinder and fix it with perforated flat steel to both outside stands with bolted connection (coach bolt M12x50 and prevailing torque type hexagon domed cap nut).
7. Check the ground clearance of rubber webbing in rest position (min. 460 mm) and loaded position with 100 kg (min. 360 mm) on both sides (see drawing).
8. In use: ground clearance shall always be **equal to or greater than 230 mm** (see drawing)
9. Check all screw connections acc. to instructions of maintenance approx. 4-5 weeks after installation and retighten, if necessary.

Please take care that all special tools (e.g. hexagon key for secured screws etc.) and all specific documents which are or may be useful for safety management acc. to EN 1176-7 (e.g. invoice, delivery note, order acknowledgement, installation instructions, maintenance instructions) are forwarded to the responsible department.



- Arrange all stands:
- at right angles to the principle axis of item
 - strictly parallel to each other
 - In alignment

