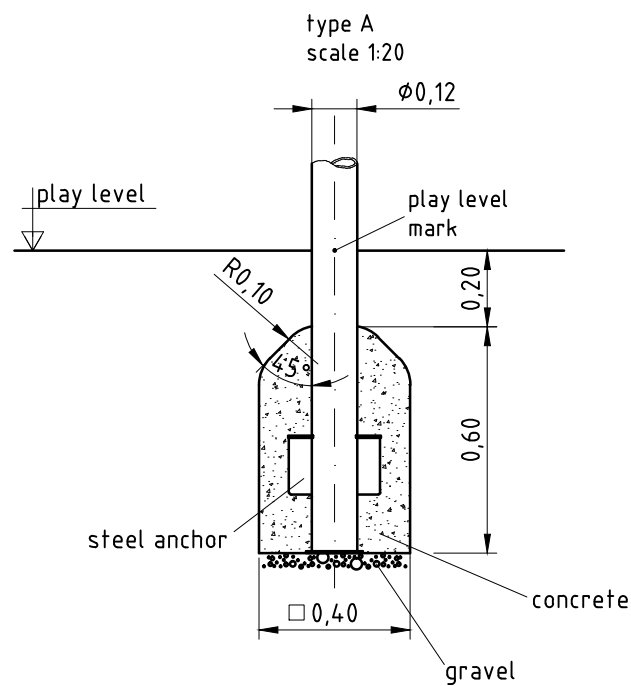
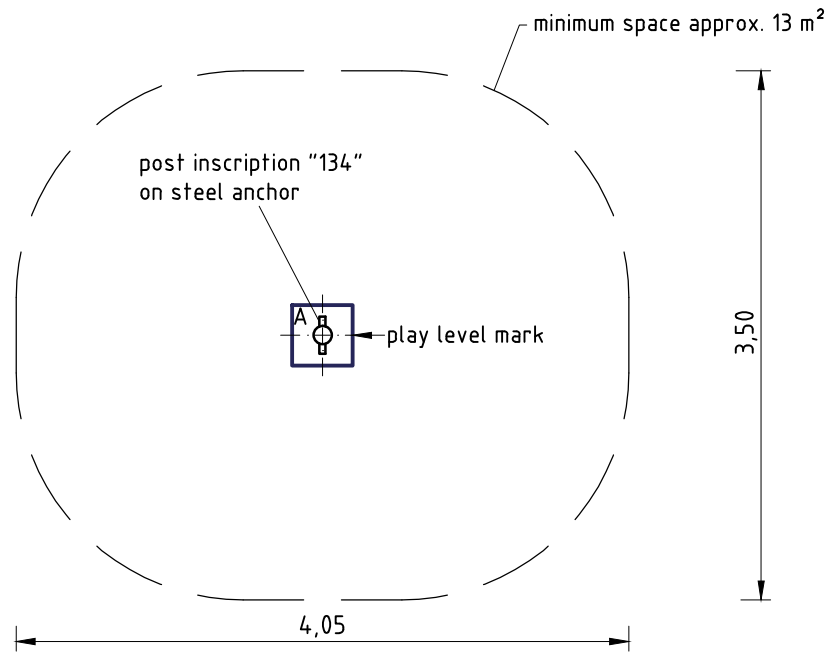
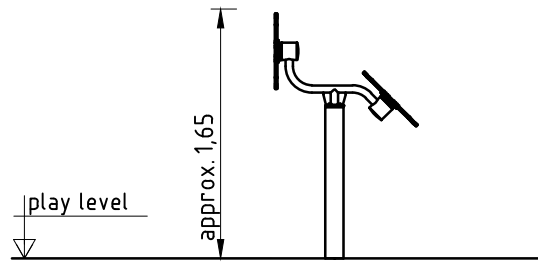


1. Assign a device location considering the (minimum) space requirement.
2. Excavate soil for foundation, according to drawing.  
Please note: To achieve maximum stability and a safe installation, a moderate level of soil solubility is required.
3. Pour in a drain layer of gravel of approx. 10 cm thickness between the bottom of the steel post and plain base of foundation.
4. Place post into the foundation hole. Play level mark (=welding pin) complies with the installation depth. Align post by means of the play level mark (see detail or foundation layout).
5. **For installation of the pre-assembled components and/or single parts, the screws slightly have to be lubricated with installation paste!**  
**Tighten all screws after having aligned all components.**  
Screw connections see detail X.
6. Grout foundation with compressed concrete C20/25, chamfer and round off the edges, cover the foundation with an appropriate surfacing material.
7. Release for play after concrete foundations have set.
8. Check all screw connections acc. to maintenance instructions after 4-5 weeks and retighten, if necessary.

Please ensure that all special tools supplied (e.g. Allen key for secured Allen screws etc.) and all specific documents which are or may be useful for safety management acc. to EN 1176-7 (e.g. invoice, delivery note, order acknowledgement, installation instructions, maintenance instructions) are forwarded to the persons responsible.



# Installation

Article No.  
0-57134-001

Description  
K&K Upper body exerciser

Scale  
1:50

Date  
03/13 EB

Page  
2/2